

SCOTCH COLLEGE
INDIGENOUS
PROGRAM





Opportunities. Experiences. Understanding.

FROM THE CHAIRMAN
AND PRINCIPAL



ENRICH
OUR SCHOOL
CULTURE AND
CREATE
LASTING
IMPACT

Scotch's Indigenous Scholarship Programme makes our school accessible to indigenous boys from across Australia. Scotch has been welcoming indigenous boys on academic and boarding scholarships since 2004.

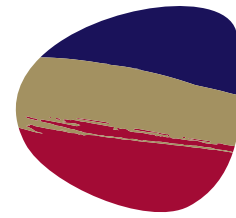
To date, thanks to the generosity of our community, and the support of the Australian Indigenous Education Foundation and the federal government, 12 boys have graduated from Scotch with their VCE, and eight have gone on to further education. All are now pursuing careers across a range of fields. Our intention is to support up to 10 indigenous boys at Scotch at any one time.

We have also been able to provide all Scotch boys with the opportunity to connect with indigenous communities, learn about indigenous culture and spend time exploring indigenous issues. Our special partnership with Tiwi College enables us to support indigenous education far beyond the immediate reaches of our school.

With the support of the Scotch Family, we are seeking to establish a perpetual Indigenous Scholarship Fund, ensuring that this successful and inspiring programme continues to enrich our school culture, and creates a lasting impact.

The Hon. Dr David Kemp
Scotch Council Chairman

Mr I Tom Batty
Principal



SCOTCH COLLEGE
INDIGENOUS
PROGRAM

FOR THE LAST
20 YEARS, THE
SCOTCH COLLEGE
INDIGENOUS PROGRAM
HAS OFFERED ALL
SCOTCH BOYS THE
OPPORTUNITY TO
EXPERIENCE AND
UNDERSTAND
OUR COUNTRY'S
INDIGENOUS CULTURE,
AS PART OF A
CONTEMPORARY
AUSTRALIAN
EDUCATION

THE PROGRAM HAS THREE COMPONENTS



Opportunities

our commitment to offer
indigenous boys full academic
and boarding scholarships



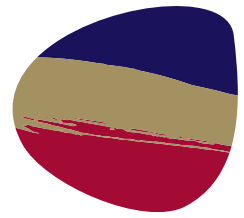
Experiences

the Indigenous Partnership
Program, which teaches
Scotch boys about
indigenous culture
through projects with
local communities



Understanding

our longstanding partnership
with Tiwi College, built on
friendship and respect



SCOTCH COLLEGE
INDIGENOUS
PROGRAM

FROM THE DIRECTOR OF THE SCOTCH COLLEGE INDIGENOUS PROGRAM



**OVER THE
LAST 20 YEARS
THE INDIGENOUS
PROGRAM
HAS BECOME
AN IMPORTANT
PART OF SCOTCH
COLLEGE LIFE**

When we first planned a football trip to the Tiwi Islands in 1996, I don't think any of us could have predicted the transformative effect it would have on our school. Over the last 20 years the Indigenous Program has become an important part of Scotch College life.

Our first scholarship students came from the Tiwi Islands and Darwin, because of our relationship with the Tiwi community. In recent years we have built relationships with indigenous communities closer to home; all of our current scholarship boys come from Victoria.

Over the years we have been learning, and working to improve the experience and outcomes for our indigenous boys. We are tremendously proud of them all, and I cannot wait to see what our Old Boys and current scholarship students will go on to achieve.

Dr Robert Smith



LEARNING AND WORKING TO IMPROVE THE EXPERIENCE

Central to our Indigenous Program is our dedicated team who work with all Scotch staff to support and mentor indigenous students. The team is ably led by Dr Robert Smith, with Michele Linossier coordinating Academic Support and Yudha Scholes leading the Indigenous Partnership Program.

The Scotch Program is built around four Ps: people, passion, persistence and patience: **people** who are **passionate** about indigenous education and respectful of cultural differences and empathetic to variances in traditional learning styles; people who are **patient** and **persistent** in working with young men, dealing with the inevitable challenges, and harnessing their capabilities to achieve realistic goals and outcomes.

Every Scotch staff member has an important role to play.

BEING A
SCOTCH BOY
MEANS TO
ME SETTING
AN EXAMPLE
FOR THOSE
WHO ASPIRE
TO HAVE AN
**IMPACT IN
INDIGENOUS
COMMUNITIES
AROUND
AUSTRALIA**

—
Orson King,
Year 12



Our Scholars 2016: Lachie Johnson, Philip (PJ) Crocombe, Orson King, Jy Simkin, Jhdara Jones, Zane Connors, Dion Johnstone and Joel Garner (not pictured).



EDUCATION
IS BOTH THE
KEY AND HOPE
FOR THE FUTURE
OF INDIGENOUS
AUSTRALIANS

The Scotch College Indigenous Program aims to embed indigenous and non-indigenous students, staff and the broader school community in the foundational belief that education is both the key and hope for the future of indigenous Australians.

Our Indigenous Scholarship Program ensures that, during the most influential years of their lives, some 1880 Scotch boys have opportunity to learn from, and develop friendships with, indigenous students.

In the last 10 years, 12 indigenous students have successfully completed Year 12 and have enriched the School's social, academic, sporting and other co-curricular activities and programs.

TONY BRIGGS ('85)

Actor, Writer, Director
and Producer
Scotch College Indigenous
Scholarship Program Patron



ENABLED ME TO ACHIEVE, AND RECOGNISE WHAT I WANTED TO DO

"What I got out of Scotch was a confidence that I was not aware I had. It helped me become, in a lot of ways, the man that I am today, without compromising my beliefs. That enabled me to achieve, and recognise what I wanted to do.

"I'm proud to be Patron of the Scotch Indigenous Scholarship Fund appeal, to ensure that this program continues to create a lasting impact."



DEVELOP THE SKILLS
AND THE CONFIDENCE
TO WALK IN BOTH
WORLDS OF
CONTEMPORARY
AUSTRALIA



Students in the program are drawn from communities across the nation. The fundamental selection criteria are resilience, including a desire to complete Year 12, and the potential to flourish in a school such as Scotch.

At Scotch they develop the skills and the confidence to walk in both worlds of contemporary Australia.

Scotch takes an innovative approach to community partnerships, academic support and mentorship. Fundamental to this is the support, encouragement and mentoring the boys receive from Scotch staff.

We work closely with indigenous community leaders to identify boys who have the capacity and family support, not only to survive at Scotch, but to thrive. These students are usually active in their communities.

We measure our success not only by completion rates, but also by the positive choices that our graduates have made in their lives beyond Scotch. By having access to a Scotch education, boys taking part in the program can become role models in their own communities.



Experiences

The Indigenous Partnership Program (IPP) is one of the most popular service activities offered at Scotch College. It is open to boys in Years 10, 11 and 12.

IN THE PROGRAM, BOYS HAVE THE OPPORTUNITY TO

LEARN

—
learn about Aboriginal culture and the issues facing indigenous Australians

CONNECT

—
make meaningful connections with local indigenous communities, and share their learning with others in the School community and beyond

STRENGTHEN

—
strengthen connections between Scotch and Tiwi College

The program offers an immersive, participatory learning experience – we often host guest speakers, or meet with elders and educators from the local indigenous community. IPP students have priority in attending the annual Garma Festival trip to East Arnhem Land, and trips to Tiwi College.

I'VE SEEN THE
**POWER THAT
POSITIVE
INDIGENOUS
ROLE MODELS
HAVE**

**CYRIL 'JUNIOR'
RIOLI ('07)**

—
AFL footballer –
Hawthorn Football Club
Scotch College Indigenous
Partnership Program Ambassador

"I'm proud to be an ambassador for the Indigenous Partnership Program. I've seen the power that positive indigenous role models have, both for indigenous kids, and the wider Australian community."



OUR PARTNERSHIP WITH TIWI COLLEGE IS A WAY FOR SCOTCH TO SUPPORT INDIGENOUS-LED EDUCATION, HELPING THE TIWI COMMUNITY BUILD A FUTURE FOR THEIR YOUNG PEOPLE



Scotch's relationship with Tiwi College began with a football match played on Melville Island in 1996, and has grown to become a valued collaboration between the two schools. It has led to the establishment of genuine, deep-rooted and ongoing friendships between Scotch boys and their Tiwi peers, as well as among educators at both schools. This regular contact has had a strong, positive impact on the Scotch Family's understanding of indigenous Australia.

Located at Pickataramoor on Melville Island, Tiwi College is an exciting and dynamic secondary boarding school, initiated and governed by the Tiwi people to provide quality education for young Tiwi people. The College is owned and managed by the Tiwi people through the Tiwi Education Board, which comprises senior men and women from all Tiwi communities.

Tiwi College is a weekly boarding facility where students are accommodated in Family Group Homes. The College caters for holistic learning; helping young Tiwi people become 'work ready'.

Boys from Tiwi College visit Scotch College for football trips and longer exchanges, billeting with Scotch families and forming genuine, lasting friendships. This experience provides wonderful opportunity for selected boys from the islands to visit Melbourne and experience non-Tiwi culture and education, and occurs thanks to the generosity of current Scotch families.

Scotch boys are welcomed into the life of the Tiwi Islands, both on football tours and cultural exchanges. Boys who have visited the Tiwi Islands describe the experience as truly life-changing, helping them to develop a deeper understanding of Australia's history, and the potential for our shared future.

We provide educational support for Tiwi College through staff exchanges, training and ongoing interaction between staff at both schools.

At its heart, our partnership with Tiwi College is about supporting the Tiwi Elders in what they know is an essential element in the lives of their young people – a quality education.



IAN SMITH

Tiwi College Principal



Understanding

"The relationship that we have with Scotch College is all about sharing culture and knowledge. Our boys who go to Scotch College are immersed in a wonderful community – I'm amazed at the love, empathy and care that the Tiwi students receive from the community of Scotch College."

INVESTING IN THE FUTURE

Twenty years after our first visit to the Tiwi Islands, we are proud of the way the Indigenous Program has developed at Scotch to positively influence the lives of all Scotch boys.

Historically, the Scotch College Foundation has approached the Scotch community annually to raise the necessary funds to activate the Indigenous Scholarship Program. Now that the program is well and truly established, and its outcomes and benefits for all associated with it have become clear, we are committed to endowing it in perpetuity.

Our goal is to provide funding certainty for the Scholarship Program by establishing an endowed fund. The derived income from this will be used to drive the Scotch contribution (\$235,000 in 2016). To achieve our goal, we need to raise \$7.5m.

The fund will be managed by the Scotch College Investment Committee, and it is hoped that its value will increase in line with increases in school tuition and boarding fees, and that its income will increase accordingly.

Donations to the Scotch College Indigenous Scholarship Fund are tax deductible.



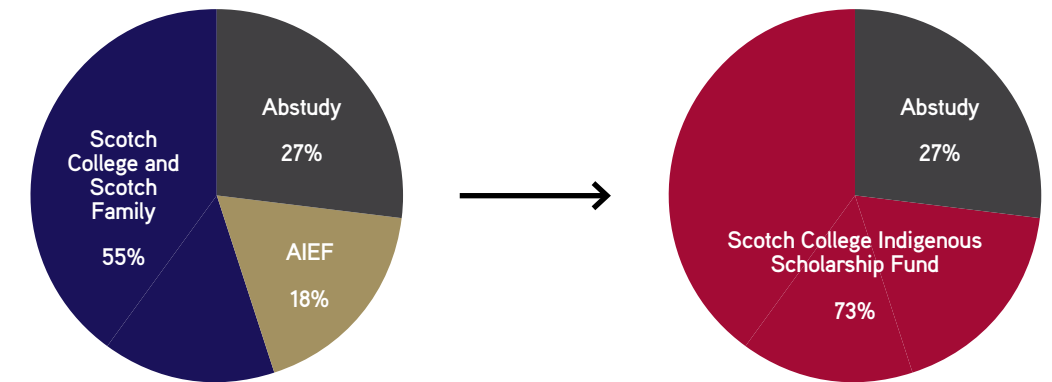
Establishing a perpetual scholarship fund

THE FUNDING MODEL

The funding model underpinning the Scotch College Indigenous Scholarship Program varies according to each boy's circumstance. For example, most scholarship boys are boarders, but some are day boys. The Australian Indigenous Education Foundation (AIEF) plays a significant role in supporting the Scholarship Program, basing their financial commitment on each boy's funding position.

The current funding model for the Scotch College Indigenous Scholarship Program.

If all Indigenous Scholarships are specifically endowed, \$7.5m needs to be raised.



Abstudy (Federal Government Funding)

Abstudy provides federal government assistance to offset expenses incurred by Aboriginal or Torres Strait Islander Australians who are studying or undertaking an Australian apprenticeship.

Australian Indigenous Education Foundation (AIEF) contribution

In 2014, Scotch was delighted to establish a partnership with the Australian Indigenous Education Foundation, which provides scholarships to enable indigenous students in financial need to attend leading Australian schools and universities.

Scotch College and Scotch Family contribution

The current Scotch contribution is a mix of funds from the School's recurrent budget supplemented by donations from members of the Scotch Family, external trusts and private ancillary funds (PAFs). Our goal is to have these components perpetually endowed through the Scotch College Foundation.



HOW YOU CAN SUPPORT

THE SCOTCH COLLEGE INDIGENOUS SCHOLARSHIP PROGRAM

For more information about the Scotch College Indigenous Scholarship program, and how you can make a difference, please contact:

Tim Shearer
Director of Development
Scotch College Development Office

1 Morrison Street
HAWTHORN VIC 3122
E tim.shearer@scotch.vic.edu.au
P +61 3 9810 4301



A

ESTABLISH A PERPETUAL SCHOLARSHIP

Establish a named perpetual fund that provides tuition and boarding for one indigenous student in perpetuity by committing \$750,000 with a single gift or a two to five year pledge.

Your generosity will be recognised with membership of the Scotch College Foundation at the Forbes Society level.

Donations to the Scotch College Indigenous Scholarship Fund are tax deductible.

To establish a perpetual scholarship, please tick box A under 'Your support'.

B

SPONSOR A STUDENT

Donate \$25,000 per annum for the duration of an indigenous student's Scotch journey (typically four years).

Your generosity will be recognised with membership of the Scotch College Foundation at the Trustee level.

Donations to the Scotch College Indigenous Scholarship Fund are tax deductible.

To sponsor a student, please tick box B under 'Your support'.

C

FOUNDATION MEMBERSHIP

Donate at any of the Scotch College Foundation membership levels by way of a one-off gift or a pledge (two-five year period):

Associate Fellow
\$10,000 – \$24,999

Fellow
\$25,000 – \$49,999

Senior Fellow
\$50,000 – \$99,999

Trustee
\$100,000+

Forbes Society
\$500,000+

Donations to the Scotch College Indigenous Scholarship Fund are tax deductible.

For a Foundation membership, please tick box C under 'Your support'.

D

LIFE SUPPORT FOR SCOTCH

Join the Life Support for Scotch program by committing to a monthly donation to the fund of your choice, corresponding to the years you are out of school.

By way of example; a member of the class of 1995, being 21 years out of school, would commit \$21 per month, which would increase to \$22 per month on 1 January next year, and so on, for as long as you wish. Tax receipts will be sent to you at the end of each financial year.

To join the Life Support for Scotch program, please tick box D under 'Your support'.

E

ONGOING SUPPORT

Make monthly or annual contributions of your choice.

Donations to the Scotch College Indigenous Scholarship Fund are tax deductible.

For ongoing support, please tick box E under 'Your support'.

F

ONE-OFF GIFT

Make a single donation of your choice.

Donations to the Scotch College Indigenous Scholarship Fund are tax deductible.

To make a one-off gift, please tick box F under 'Your support'.

G

STAFF SUPPORT

Scotch College staff can select any of the other options outlined or they can elect to make monthly or annual deductions from their salaries.

Donations to the Scotch College Indigenous Scholarship Fund are tax deductible.

For staff support, please tick box G under 'Your support'.

H

BEQUEST

Include a contribution to the Scotch College Indigenous Scholarship Fund in your will.

For more information about the Scotch College Foundation's Bequest Program contact the Scotch College Development Office.

For a bequest, please tick box H under 'Your support'.

YOUR SUPPORT

I WOULD LIKE TO SUPPORT THE APPEAL FOR THE INDIGENOUS SCHOLARSHIP PROGRAM BY:

A Establishing a Perpetual Scholarship

Use Pledge or Single Gift payment options: total of \$750,000

B Sponsoring a student

Use Pledge payment option: \$25,000 p.a. for four years totaling \$100K

C Foundation membership

Use Pledge or Single Gift payment options: \$10,000 and over (see Foundation membership levels)

D Life Support for Scotch

Use Life Support for Scotch payment option

E Ongoing support

Use Regular Gift payment option

F One-off gift

Use Single Gift payment option

G Staff support

Use Regular Gift payment option

H Bequest

Please contact the Scotch College Foundation for more information about the Scotch College Bequest Program

PAYMENT OPTIONS



PLEDGE

I _____ and _____

of _____ undertake to the Scotch College Foundation that I will give to the Scotch College Indigenous Scholarship Fund:

The sum of \$ _____ by _____ equal instalments of

\$ _____ per annum payable on the / / each year

commencing on the / /

OR

The sum of \$ _____ payable as follows:

2016	2017	2018	2019	2020

If the gift is \$10,000 or more you will become a member of the Scotch College Foundation.

LIFE SUPPORT FOR SCOTCH

OSCA year level / / / Starting donation \$ _____ per month.

I authorise Scotch to increase my monthly donation by \$1, on 1 January each year.

REGULAR GIFT

Please accept my annual / monthly gift of:

\$25 \$50 \$75 \$100 \$250 \$500

\$1,000 \$2,000 \$5,000 Other amount \$ _____

SINGLE GIFT

Please accept my gift of:

\$100 \$250 \$500 \$1,000 \$2,000 \$5,000

Other amount \$ _____

YOUR DETAILS

CONTACT DETAILS

Name

Address

Postcode

Phone

Mobile

Email

The following portion to be completed only in the case of an applicant being a corporation or a number of persons.

We hereby nominate

of

to represent us for all purposes of the Foundation.

Dated the / /

Signed by the said:

This undertaking is to be signed by all applicants being natural persons, and by the secretary of any unincorporated association which applies. In the case of a corporation the undertaking shall be under seal.

DONOR RECOGNITION

- I would like my donation to remain anonymous
- Please record my gift (not the amount) in the published list of donors as follows:

PAYMENT OPTIONS

CREDIT CARD DETAILS

Card no.

_____ - _____ - _____ - _____

Expiry date

CSV

 / /

Cardholder name

Signature

BANK ACCOUNT DETAILS

BSB

Account no.

_____ - _____

Cardholder name

Bank

CHEQUES PAYABLE TO SCOTCH COLLEGE INDIGENOUS SCHOLARSHIP FUND

- I have elected to pay by cheque

Donations of \$2 or more are tax deductible

Donations can be made online by visiting www.scotch.vic.edu.au

PLEASE COMPLETE THE FORM AND RETURN IT TO THE SCOTCH COLLEGE DEVELOPMENT OFFICE

MAIL 1 Morrison Street, Hawthorn, VIC 3122

EMAIL scan and email to foundation@scotch.vic.edu.au

FAX (03) 9810 4334



Opportunities. Experiences. Understanding.

To support the Scotch College Indigenous Scholarship Fund, please contact the Scotch College Foundation.

Email foundation@scotch.vic.edu.au or visit www.scotch.vic.edu.au